

HOME

**UNDERWATER
VIBROCORING**

**SELECTING A
VIBROCORER**

**CORETUBES,
LINERS, & CORE
RETENTION**

**BUOYANT-FRAME
vs RIGID FRAME**

SPECIFICATIONS

**OPERATIONS
FURTHER NOTES**



ROSSFELDER CORPORATION

PO Box 1030, Poway Ca 92074-1030

Phone: 858-679-7361

Fax: 858-679-7491

UNDERWATER ELECTRICAL VIBROCORERS With BUOYANT FRAME



PICTURE OF VT-6 ON BACK DECK OF R.V. LONGHORN

Our Models

(Click on each product for more information and Prices.)



VT-1



P-3



P-5



PARTS & ACCESSORIES



INDEMNIFICATION & WARRANTY

UNDERWATER VIBROCORING SYSTEMS

HOME

UNDERWATER
VIBROCORING

SELECTING A
VIBROCORER

CORETUBES,
LINERS, & CORE
RETENSION

BUOYANT-FRAME
vs RIGID FRAME

SPECIFICATIONS

OPERATIONS
FURTHER NOTES

Vibrocoring is an efficient and versatile procedure for obtaining long, well-preserved cores in consolidated water-saturated sediments from wetlands, harbors and lakes to the deep ocean. It allows for deep penetration in a single deployment and a high core recovery where other approaches such as rotary-drilling, dart-coring, or cf-augering prove either inappropriate or impractical.



Vibrocoring on Small Inflatables in Marsh

For a long time, however, a more widespread use of vibrocoring techniques was hampered by the weight and bulk of the few existing vibrocorers with their cumbersome ancillaries and by the resulting high costs of their deployment.



*Vibrocoring on Pontoon Barge in
San Diego Bay.*

Our SUBMERSIBLE ELECTRICAL VIBROCORERS, developed through years of fieldwork in distant waters, endeavored to correct this problem. They are sturdy and powerful, yet light and compact. They can be airfreighted at minimal cost anywhere in the world to be operated from local vessels-of-opportunity and even from inflatable barges or helicopters. Our patented "buoyant-frame" offers a practical way to set them upright on the seafloor and to guide them. Their "flow-through" vibrohead allows for special procedures such as probe embedment and incremental coring. Designed to withstand deep ocean pressures, rough seas and arctic cold, fully enclosed, easy to clean, our Vibrocorers have also become tools of choice for retrieving cores in contaminated sediments and hazardous environments.

PO Box 1030, Poway CA 92074-1030
Phone: 858-679-7361
Fax: 858-679-7491

SELECTING A VIBROCORER

HOME

UNDERWATER
VIBROCORING

SELECTING A
VIBROCORER

CORETUBES,
LINERS, & CORE
RETENSION

BUOYANT-FRAME
vs RIGID FRAME

SPECIFICATIONS

OPERATIONS
FURTHER NOTES

Our various submersible models, described in the center pages and further commented below, essentially differ in terms of portability, mode of vibration, force, power requirements and depth rating. However, the performance of a vibrocoring depends in the final analysis upon the capacity of the sediment particles to move and give way to the coretube with less energy spent than received. Therefore the best results will always be obtained in unconsolidated, water-logged, heterogenous sediments.

VT-1

This high-frequency low-amplitude model, which replaces the P-1, is our lightest unit. Its motors operate on 115 volts 50-60Hz, for example on a standard "camping-type" generator. Its thin non-armored electrocable can be handled without mechanical means to an approximate depth of about 150 m (495 feet). A kevlar-jacketed cable is recommended beyond this depth. The VT-1 operates at a range near "resonant-drive", and in a "vibro-torsional" mode. The high-speed contra-rotating vibrators are positioned along the same axis rather than in parallel. This novel configuration that we pioneered with the VT-6 enhances the penetration by adding a slight horizontal oscillatory torque to the vertical amplitude.

P-3

This lightweight, mid-size model operates in a vibro-percussive mode and is intended for standard survey work in a variety of sediments. It is compact, easy to handle and very efficient. Its capabilities approach, in many sediments, the performances of the more powerful P-5. It requires a 3-phase, 230 volt or 460 volt, 50-60Hz current. The P-3 is deployed with a separated non-armored electrocable to about 350 feet (100 m) depths, but requires a kevlar center cored cable for greater depths.

P-5

Our most powerful model, the P-5 houses a pair of vibrator motors, the same model of vibrator motor as in the P-3, but in a contra-rotating configuration that doubles the vertical motion of the unit. Its twin cylinder housing and compact shape offers easier access to its internal parts - should, for example, the vibrator motor's wiring harness be switched between 230v or 460v current.

Special Procedures

All our Vibroheads, have a provision for injecting water under pressure at the top of the coretube in order to perform such special procedures as water-jetting and incremental coring.

****An important note about the power requirements:***

The P-3 and the P-5 require a 230-460 volt, 3-phase current. This is the voltage measured at the vibrohead. Voltage losses along the electrocable should be computed or tested, and taken into account. Usually, these motors will take an excess voltage of 10% above the rated voltage but may be damaged and even burnt if the voltage at the vibrohead is below 5% of this rated voltage. In view of such voltage loss, the 460v setting may be preferred for deepwater work.

PO Box 1030, Poway CA 92074-1030

Phone: 858-679-7361

Fax: 858-679-7491

HOME

CORETUBES & LINERS

UNDERWATER
VIBROCORING

SELECTING A
VIBROCORER

CORETUBES,
LINERS, & CORE
RETENSION

BUOYANT-FRAME
vs RIGID FRAME

SPECIFICATIONS

OPERATIONS
FURTHER NOTES

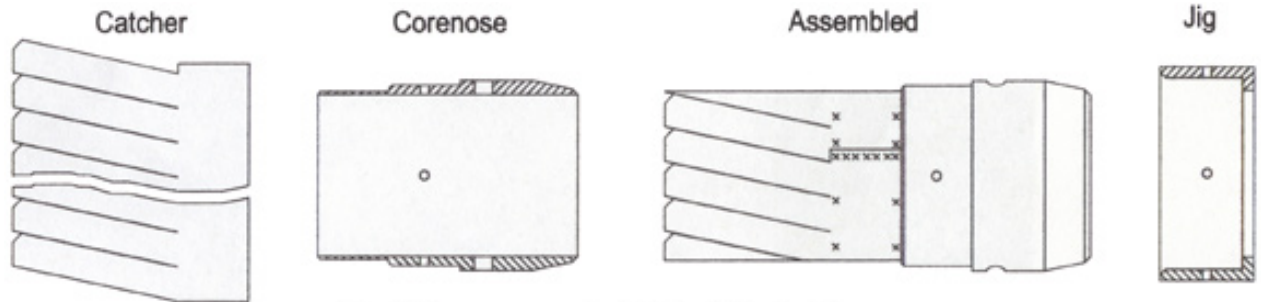


CORE SAMPLE

Our vibrocorers can be operated with steel or aluminum coretubes with or without liners.

If the metal coretube is intended to be used with a plastic liner, it is often difficult to find the matching tubes and liners off the shelf, i.e. a plastic liner with an OD smaller than the ID of the coretube (generally by some 0.060-0.080" or 1.5-2mm). In this case the best solution is to first select the coretube and to have the liner custom-made to match it. Most common liners are made of polycarbonate or CAB (cellulose-acetate butyrate). Note that in non-abrasive sediments a soft polyethylene tube (usually purchased in 6" wide x 1000 ft rolls) with a thickness of 6 mils for the VT-1 to 8-10 mils for the P-3, can be an effective, easy-to-find alternate to a rigid plastic liner.

As a rule of thumb, optimum penetration is generally achieved with steel coretubes in the 3.5" to 4" (8.9 to 10.2cm) diameter and 0.083 to 0.120" (2 -3 in) wall thickness. However, in similar diameter, expendable linerless thin-wall aluminum coretubes, e.g. 0.062 - 0.080" (1.5 - 2 mm) wall thickness, often are the most practical candidates for a vibrocoring project that requires a hard case to ship samples to a lab. Please Note: Aluminum core tubes can not be used with the P-5. Also, some of our clients have obtained excellent results with bare, stiff plastic Lexan coretubes, e.g. 4.0" OD. 0.125" wall, up to 20 ft long, without any metal coretubes or connoses, provided with a plastic core-catcher (orange-peel type) simply glued inside the tube.



4 Inch Corenose used with Hard Plastic Liner

RETENTION OF THE CORE :

In order to maximize the core recovery, the retention of the core is a factor as important as the penetration achieved. To this effect, our vibrocoring systems incorporate a tight-sealing water-escape valve mounted within the vibrohead. Reusable plug-valve to fit the top of the coretube itself and also stainless-steel thinwall corenose with fingered (orange-peel) core-catcher can be delivered upon request for the diameters to be exactly specified by the client. The corenoses can be fabricated with a stepped shoulder for the seating of a hard internal liner.

PO Box 1030, Poway CA 92074-1030
Phone: 858-679-7361
Fax: 858-679-7491

BUOYANT FRAME AND RIGID FRAME

HOME

UNDERWATER
VIBROCORING

SELECTING A
VIBROCORER

CORETUBES,
LINERS, & CORE
RETENSION

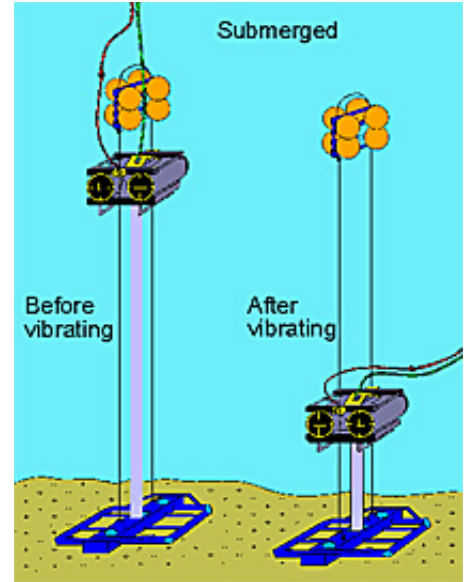
BUOYANT-FRAME
vs RIGID FRAME

SPECIFICATIONS

OPERATIONS
FURTHER NOTES

All our vibrocorers can operate in the Buoyant-Frame Mode or in the Rigid-Frame Mode. Our patented well-received Buoyant-Frame arrangement is a very efficient and easy way to deploy the vibrocorers, leaving the use of the Rigid-Frame for such special situations as insufficient water-depths or strong currents.

With the Buoyant-Frame, the Vibrocorer is maintained in proper vertical position by two guidelines held taut between a Float Package and a Weightstand. The larger Weightstand is provided with ballast boxes so the easy-to-find ballasting material such as lead bags or scrap metal can be used in the field. For deployment, the Vibrocorer is lowered with the Weightstand hanging on its guidelines from the Vibrohead. The Float Package is hooked-up to the guidelines when the Vibrohead reaches the deck level. After coring and pull-up the system is retrieved in the reverse way. In case of limited deck space or overhead clearance, or to further accelerated the procedure at sea, the Weightstand can be left in as overboard cradle.



TAINED SAMPLES FORM IRON RUST, LUBRICANTS. GREASES, OR CUTTING FLUIDS?

Because our vibrocorers are 100% electrical with no external moving parts, they do not require any lubricants. The system is completely constructed from high grade aluminum and them anodized so there is no iron or lead associated with the system. Vibrocoring does not produce any waste cutting requiring disposal. In fact, the boring hole usually collapses when the coretube is extracted.

PO Box 1030, Poway CA 92074-1030
Phone: 858-679-7361
Fax: 858-679-7491

HOME	STANDARD SUBMERSIBLE MODELS	VIBRO- TORSIONAL HIGH- FREQUENCY VT-1	VIBRO- PERCUSSIVE P-3	VIBRO- PERCUSSIVE P-5
UNDERWATER VIBROCORING				
SELECTING A VIBROCORER	WORKING DEPTH	To 1,500m (5,000 ft.)	To 600m (2,000 ft.)	To 600m (2,000 ft.)
	POWER REQUIREMENTS	115v, 50-60 Hz, single ph	230 or 460v, 50-60 Hz, 3ph	230 or 460v, 50-60 Hz, 3ph
CORETUBES, LINERS, & CORE RETENSION	AVERAGE RUNNING AMPS while vibrocoring	12Amps	4.5 Amps (low setting) to 7 Amps (high setting on 230v	9Amps (low setting) to 14Amps (high setting) on 230v
BUOYANT-FRAME vs RIGID FRAME				
SPECIFICATIONS	FORCE 1 KN = 225 lbs	To 16 KN	16.0 KN to 24.0 KN on 60 Hz 10.9 KN to 16.4 KN on 50 Hz	32.0 KN to 48.0 KN on 60 Hz 21.8 KN to 32.8 KN on 50 Hz
OPERATIONS FURTHER NOTES				
	VIBRATION FREQUENCY	0-9,000 vpm on 60 Hz 0-7,500 vpm on 50 Hz	3,450 vpm on 60 Hz 2,850 vpm on 50 Hz	3,450 vpm on 60 Hz 2,850 vpm on 50 Hz
	TYPICAL CORETUBE'S LENGTH/ DIAMETER	4.5m/76mm (15ft/3.0") 3.0m/102mm (10ft/4.0")	6.0m/76mm (20ft/3.0") 4.5m/102mm (15ft/4.0")	6.0m/102mm (20ft/4.0")
	STANDARD CLAMP	102mm (4.0")	102mm (4.0")	102mm (4.0")
	CLAMP ON REQUEST	from 76mm (3.0")	from 76mm (3.0")	from 76mm (3.0")
	VIBROHEAD WEIGHT	43 kg (95 lbs)	68 kg (150 lbs)	147 kg (325 lbs)

TYPICAL SHIPPING WEIGHT of an operating system	340 kg (750 lbs)	410 kg (900 lbs)	590 kg (1,300 lbs)
ADD WEIGHSTAND BALLAST	23 kg (50 lbs)	27 kg (60 lbs)	68kg (150 lbs)
ADD GENERATOR IF REQUIRED	4.5 kw, 50 kg (110lbs)	10.5 KVA, 135 kg (300 lbs)	15 KVA, Vessel power

PO Box 1030, Poway CA 92074-1030
Phone: 858-679-7361
Fax: 858-679-7491

OPERATIONS - Further Notes

HOME

UNDERWATER
VIBROCORING

Selection and availability of coretubes and liners

SELECTING A
VIBROCORER

A client must decide if they want to use a steel coretube + liner or a bare aluminum coretube. This decision is to be made in part as a function of what is locally available. For overseas work, due to the fragility and bulkiness of liners, one needs to see if liners can be found locally, off-the-shelf, or can be locally extruded to custom specs. Air shipment of a few adequate steel tubes and corenoses to fit the liners are not an expensive proposition. We stress that the diameter clearance between the coretube's ID and the liner's OD should be in the order of 1-2mm (0.020" to 0.040").

CORETUBES,
LINERS, & CORE
RETENSION

BUOYANT-FRAME
vs RIGID FRAME

Length of coretubes vs. length of sample

If a client wants a 15ft. (4.5m) core sample, the coretube needs to be 16ft. (4.8m). This is because some 6" are lost when inserting the coretube into the vibrohead and another 6" are lost with the attachment of the corenose and retainer.

SPECIFICATIONS

OPERATIONS
FURTHER NOTES

Vessel operations and drawworks

The size of the vessel does not have as much relevance as does its maneuverability, although it must be large enough to support an A-frame of adequate size along with working deck space.

Taking a core with our vibrocorers is a relatively fast, but not an instantaneous operation, therefore the vessel must be able to maintain its position in the core site and remain on position while the vibrocorer is deployed and coring. The vibrocorer is deployed from the vessel with the winch line and the vibrocorer's electrical cable. If the vessel drifts away from the vibrocorer operating on the sea floor, the tension on the winch line can pull the vibrocorer over or the electrical cable may not have sufficient length and may snap. This will damage the connectors and could cause an electrical short or damage the vibrocorer's motors.

Also, if the vessel drifts or swings on its anchor chain, the vessel will not be over the vibrocorer during the extraction of the coretube from the sediment resulting in the winch cable's vibrocorer-to-ship angle not being vertical. This can make the recovery process very difficult. Bent coretubes, and/or loss of coretubes and samples can be expected.

All this means, the vessel must have either the ability to deploy several anchors to maintain position or in the case of deep water coring, a good real time maneuverability.

Nighttime operation: If a client wishes to work during the evening hours the working area on the deck must be well lit and with lights on top of the A-frame to cover the work area behind the stern.

A-frame size and load capacity: To determine the necessary height needed for a vibrocoring operation, please use this following calculation:
Length of coretube + 4ft. (1.2m) for the vibrohead, lifting bridle, shackle and lifting eye in the end of the winch line (most eyes are made with 3 cable clamps, making them approximately 10-12 inches long that will not pass through the sheave under load.)

The measurement is made below the sheave hanging from the A-frame. Example: To get a 15ft. core sample, use a 16ft. coretube +4ft, thus a total of 20ft. working height required. Please note that if a pivoting A-frame is used that working height is measured not when the A-frame is vertical over the deck, but rather when it is tilting over the stern clearing the deck.

Two types of A-frames or crane: A pivoting A-frame is preferred. If a fixed A-frame is used, the vessel must provide a second winch to pull the vibrocorer aboard the vessel. If a sea crane is to be used, it must be able to work at sea with the roll of the vessel not affecting the boom's position or length and it must have its own winch, not a winch at some other location on the deck.

Both the drawworks and the winch and wire line must be able to handle a minimum working load of 2 tons. If sand is expected, a 3 ton system should be used.

Penetration capabilities of the P-5 Vibrocorer

Penetration depths and recovery rates depend on many factors such as the water content of the sediment, particle size and shapes, compaction / density, and even calcification. There is no core site that is exactly the same, thus predicting correct penetration depths can not be done. However, the following examples will attempt to define the P-5's capabilities. All cases used a 4"OD steel coretube 20ft in length with a 0.083" or 0.120" wall thickness and liner during various operations from 1990-95.

Pure coral sands and reef debris

i.e. Red Sea, South pacific atolls and reefs, West coast of Australia. Water depths 60-400ft. The penetration depths ranged between 6-12ft. As the percentage of shell fragments increase and the calcite sand percentage drops the depth decreases. This may be due to larger angular fragments that will not rearrange themselves allowing passage into the corenose. Also, the more abundant calcium could be cementing the fragments. Be aware these core sites require the most force to remove the coretube from the sediment compared to any other. Small vessels under 50ft. will have difficulty extracting the coretube from the sea floor. There is always a chance that the coretube will be lost when coring in this sediment type.

Arctic till and glacier debris:

Arctic ocean, Bering Sea, Gulf of Alaska, Hudson River, The Great Lakes of N. America. Water depths 50-500ft. The penetration depths will range between 3-15ft. As the debris increase into cobble size the penetration depth decreases. Retention of the sample will vary greatly. A large cobble lodged in the corecatcher can allow the fine particles to be lost, however it can also completely seal the catcher yielding 100% recovery.

Shallow Continental shelf sand & silts

West and East coast of N. America, Mediterranean Sea, Strait of Gibraltar. Water depths 20-800ft. In these sediments the percentage of sand vs. silt will determine the penetration depth. A pure silica sand, large homogeneous grain size, will compact during vibration. Sample penetration can range between 8-20ft. with the longer core being achieved in deeper water depths (lower energy levels during deposition.) As the percentage of silt increases the coring penetration will also increase. Heterogeneous sediments will core the best. In many cases using a 20ft. coretube the final penetration depth will stop after the coretube has encountered a clay horizon. The P-5 can usually recover a 2-5ft. terminal plug of a stiff dry clay. Stiff dry friable clay is defined by us as "pushing a screw driver into the sample is very difficult". A clay with higher water content will allow a longer plug.

Deep Ocean Sediments

Gulf of Mexico, China Sea, North Atlantic, East coast of Africa, Indonesia. Water depths 600-1200ft. The P-5 vibrocorer has for many years been used as a backup tool for the piston corer and dart corer during hydrocarbon surveys. When the dart corer encounters sand deposits, 1000-3000ft. water depths, penetration and recovery are usually zero. The coretube of the dart corer becomes bent upon impact with the sea floor. When this happens the P-5 is deployed. Penetration and recovery rates in these water depths depend more upon the ability of the vessel remaining exactly on location, not pulling the vibrocorer over, and also the water currents dragging on the winch and electrical power cable. The P-5 has the coring power for a 20ft. core in this condition, but there is still a chance of a washout of the sample from the corecatcher during the long travel back to the surface. Water swirling around the corenose can wash the coretube clean even with a perfect vacuum seal on the top of the coretube. A provision or modification to the corecatcher and or weightstand to prevent washout should be considered. Many 10ft. and 20ft. samples have been recovered in this depth of water.

Penetration capabilities of the P-3 Vibrocorer: 10%-30% less than the P-5

Penetration capabilities of the VT-1 Vibrocorer: This is our smallest and lightest unit. It is intended for light duty operation such as soft mud and sand in lake bottoms, settling tanks, low depositional environments. 3ft to 10ft cores.

PO Box 1030, Poway CA 92074-1030

Phone: 858-679-7361

Fax: 858-679-7491

VT-1

HOME

UNDERWATER VIBROCORING

UNDERWATER VIBROCORER (VIBROTORSIONAL)

110 volts AC, 50-60 Hz, 1-Phase, 12 Amps,\$24,750.00

Includes: pressure-housed vibrohead with terminal power cable section, 4.0" (or 100mm) coretube clamp, water stop valve and control-box with initial power cable connections.

SELECTING A VIBROCORER

CORETUBES, LINERS, & CORE RETENSION

BUOYANT-FRAME vs RIGID FRAME

SPECIFICATIONS

OPERATIONS FURTHER NOTES



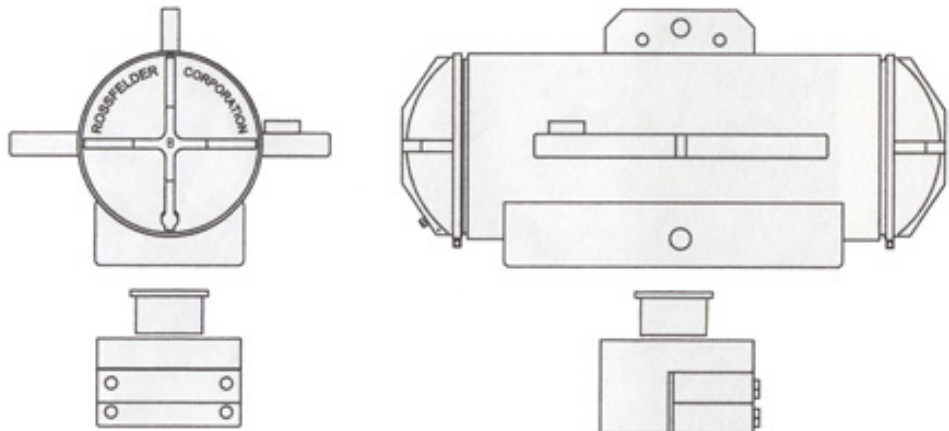
BUOYANCY FRAME SYSTEM.....\$4,100.00

Includes: weightstand, "200-fathom" float package, guidelines and runners for buoyant-frame mode operation. Does not include: upper beam and rigid-frame legs, ballasting material for weightstand.

WORKING DEPTH is **1,650 m (5,000 ft)** for the Vibrohead and **400 m (1,200 ft)** for the standard "200- fathom" Float Package accompanying the Buoyancy frame system. Floats rated to 500 m and to 800 m are available on special request.

* See Parts & Accessories for underwater power cables, generators and conenoses.

All prices FOB, San Diego California USA.



Length = 24 in

Width = 14 in

Height = 11 in

[back]

PO Box 1030, Poway CA 92074-1030

Phone: 858-679-7361

Fax: 858-679-7491

P-3

HOME

UNDERWATER VIBROCORING

UNDERWATER VIBROCORER

230/460 volts, 50-60 Hz, 3-Phase, 6 amps on 230 volts.....\$31,000.00

Includes: pressure-housed vibrohead with terminal power cable section, 4.0" (or 100mm) coretube clamp, water stop valve and control-box with initial power cable connections.

SELECTING A VIBROCORER

CORETUBES, LINERS, & CORE RETENSION

BUOYANT-FRAME vs RIGID FRAME

SPECIFICATIONS

OPERATIONS FURTHER NOTES



P-3 Deployed Over Stern of Boat

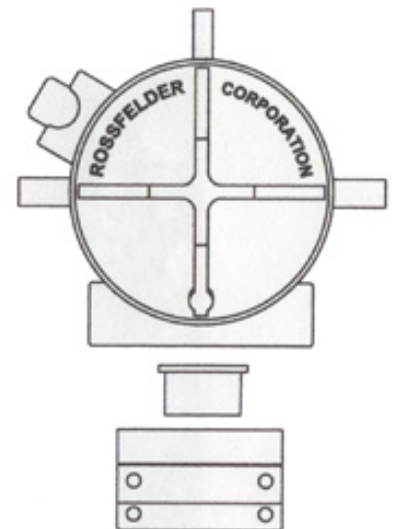
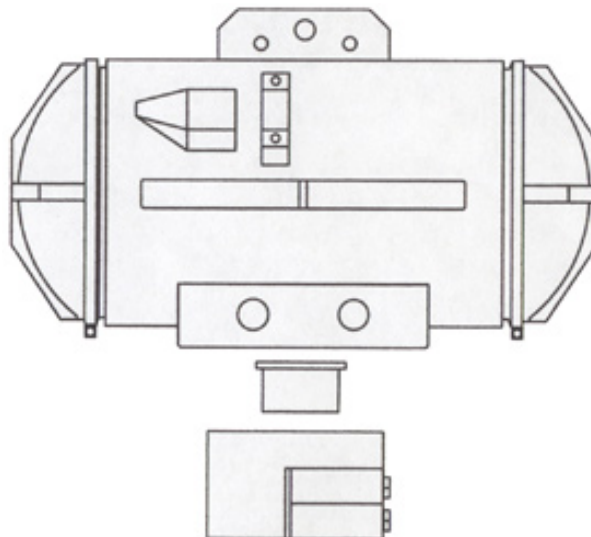
BUOYANCY FRAME SYSTEM..... \$4,100.00

Includes: weightstand, "200-fathom" float package, guidelines and runners for buoyant-frame mode operation. Does not include: upper beam and rigid-frame legs, ballasting material for weightstand.

WORKING DEPTH is **650 m (2,000 ft)** for the Vibrohead and **400 m (1,200 ft)** for the standard "200- fathom" Float Package accompanying the Buoyancy frame system. Floats rated to 500 m and to 800 m are available on special request.

* See Parts & Accessories for underwater power cables, generators and corenoses.

All prices FOB, San Diego California USA.



Length = 22 in

Width = 14 in

Height = 13 in

[back]

PO Box 1030, Poway CA 92074-1030

Phone: 858-679-7361

Fax: 858-679-7491

P-5

HOME

UNDERWATER
VIBROCORING

UNDERWATER VIBROCORER

230/460 volts, 50-60 Hz, 3-Phase, 10-16 amps* on 230 volts.....**\$44,000.00**

Includes: pressure-housed vibrohead with terminal power cable section, 4.0" (or 100mm) coretube clamp, water stop valve and control-box with initial power cable connections.

SELECTING A
VIBROCORER

CORETUBES,
LINERS, & CORE
RETENSION

BUOYANT-FRAME
vs RIGID FRAME

SPECIFICATIONS

OPERATIONS
FURTHER NOTES



BUOYANCY FRAME SYSTEM.....**\$5,000.00**

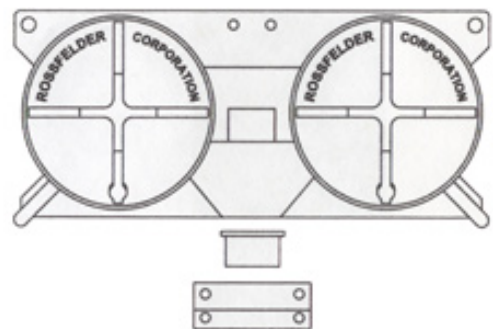
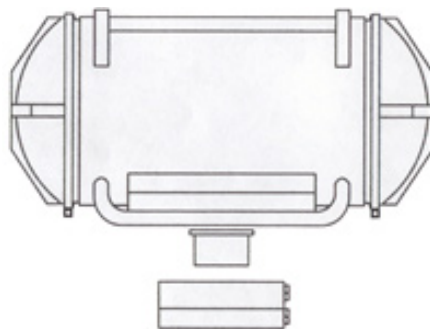
Includes: weightstand, "200-fathom" float package, guidelines and runners for buoyant-frame mode operation. Does not include: upper beam and rigid-frame legs, ballasting material for weightstand.

WORKING DEPTH is **650 m (2,000 ft)** for the Vibrohead and **400 m (1,200 ft)** for the standard "200- fathom" Float Package accompanying the Buoyancy frame system. Floats rated to 500 m and to 800 m are available on special request.

*On 60Hz current, frequency is 3500vpm, nominal force is 48kN (10,800 lbs) at high eccentric setting and 32kN (7,200 lbs) on low setting. On 50 Hz current, frequency is 2900vpm, nominal force is 32kN (7,200 lbs) at high eccentric setting and 22kN (5,000 lbs) on low setting. Standard settings are at 32kN in either case.

* See Parts & Accessories for underwater power cables, generators and corenoses.

All prices FOB, San Diego California USA.



Length = 26 in Width = 23 in Height = 12 in

[back]

PO Box 1030, Poway CA 92074-1030
Phone: 858-679-7361
Fax: 858-679-7491

ROSSFELDER CORPORATION

HOME

UNDERWATER
VIBROCORINGEffective January 2008
U.S. DOLLARSSELECTING A
VIBROCORER

PRICES, PARTS & ACCESSORIES

Non-armoured Underwater Electrical Power Cable

CORETUBES,
LINERS, & CORE
RETENSION

main section connecting with the initial control-box section and the terminal vibrohead section.

BUOYANT-FRAME
vs RIGID FRAME

VT-1

SPECIFICATIONS

OPERATIONS
FURTHER NOTES

Standard length 50 meters (165 ft), underwater connectors at each end	\$ 645.00
Per additional meter	\$ 6.00 / meter

P-3, P-5

Standard length 50 meters (165 ft), underwater connectors at each end	\$ 1,100.00
Per additional meter (up to o150 meter lengths)	\$ 8.00 / meter
For Kevlar cored center SM cable (required for cables 150 and over)	\$ 32.00 / meter

Riveted Corenoses, Catchers & Parts

IMPORTANT: Client is to specify exact OD and wall thickness of coretube and, if applicable, of liner. Send samples if possible.

<i>* Corenoses with orange-peel core-catcher for linerless coretubes with an OD of:</i>	3.0" (75mm)	3.5" (90mm)	4.0" (100mm)
Set of 5 corenoses w/ catchers, stainless steel	\$1,700*	\$1,725*	\$1,820*
Core-catcher (spare, each) stainless steel	\$55	\$59	\$62
Jig for hole alignment in coretube	\$210.00	\$220.00	\$230.00
Rivet tool, Heavy duty	\$300.00	\$300.00	\$300.00

** Add 20% for corenoses made for coretubes with liners. Sample of the coretube and of the liner are required for exact fit.*

Portable Generators: Price upon request

ALL PRICES ARE SUBJECT TO CHANGE WITHOUT NOTICE

All prices FOB, Poway California USA

[back]

PO Box 1030, Poway CA 92074-1030

Phone: 858-679-7361

Fax: 858-679-7491

ROSSFELDER CORPORATION

HOME

UNDERWATER
VIBROCORING

SELECTING A
VIBROCORER

CORETUBES,
LINERS, & CORE
RETENSION

BUOYANT-FRAME
vs RIGID FRAME

SPECIFICATIONS

OPERATIONS
FURTHER NOTES

INDEMNIFICATION NOTICE

The coring equipment sold by ROSSFELDER Corporation is meant to be operated or handled by persons versed in the utilization of oceanographic, coring and drilling equipment and from vessels or platforms properly equipped to this end. By accepting the delivery of the equipment, the client agrees to indemnify and hold harmless ROSSFELDER Corporation, its officers and employees from and against all claims, damages, losses and expense, including reasonable attorney's fees, which are for bodily injury or death or for property damage including loss of use, arising out of or in connection with the operation of such equipment at sea or otherwise.

ONE YEAR LIMITED WARRANTY

All ROSSFELDER Corporation Vibrocoring units are warranted for a period of one year (12 months) from date of purchase for the original owner. We will repair at our facility, without charge for parts or labor, any defects due to faulty materials or workmanship. This warranty does not apply to accessories or damage caused by improper usage, electrical damage caused by improper current supplies or voltage loss due to long power cable lengths. This warranty also does not cover leaks or water damage to vibrator motor or electrical controls. A complete vacuum inspection of the vibrohead and O-ring inspection of all connections prior to each day of operation is recommended.

To obtain warranty service the customer must receive a return authorization from Rossfelder Corporation and the unit must be shipped PREPAID. Rossfelder Corporation will not accept COLLECT freight. Unit must be packaged in a wood crate with forklift skids and insured. All warranty work will be returned *freight collect*.

While great effort has been made to provide guidelines and energy outputs for each model, ROSSFELDER Corporation cannot warrant its vibrocoring units to penetrate a specific water saturated substrate to a particular depth. Customers are cautioned that core-depth-penetration is greatly affected by water content, grain size and shape, type of material, depositional environment, cementation, etc. Therefore the suitability of a unit for a specific application must be determined by the customer and cannot be warranted by ROSSFELDER Corporation.

[back]

PO Box 1030, Poway CA 92074-1030

Phone: 858-679-7361

Fax: 858-679-7491